

HELITOM s.r.o.



# CHOTOUŇ LKCO heliport





## Content of the presentation

- ✓ General information – Chotouň heliport
- ✓ ATZ Chotouň
  - ✓ Horizontal situation
  - ✓ Vertical situation
- ✓ Traffic circuits
- ✓ Restricted airspace in terms of noise abatement
- ✓ Example of RT procedures for arrival and departure



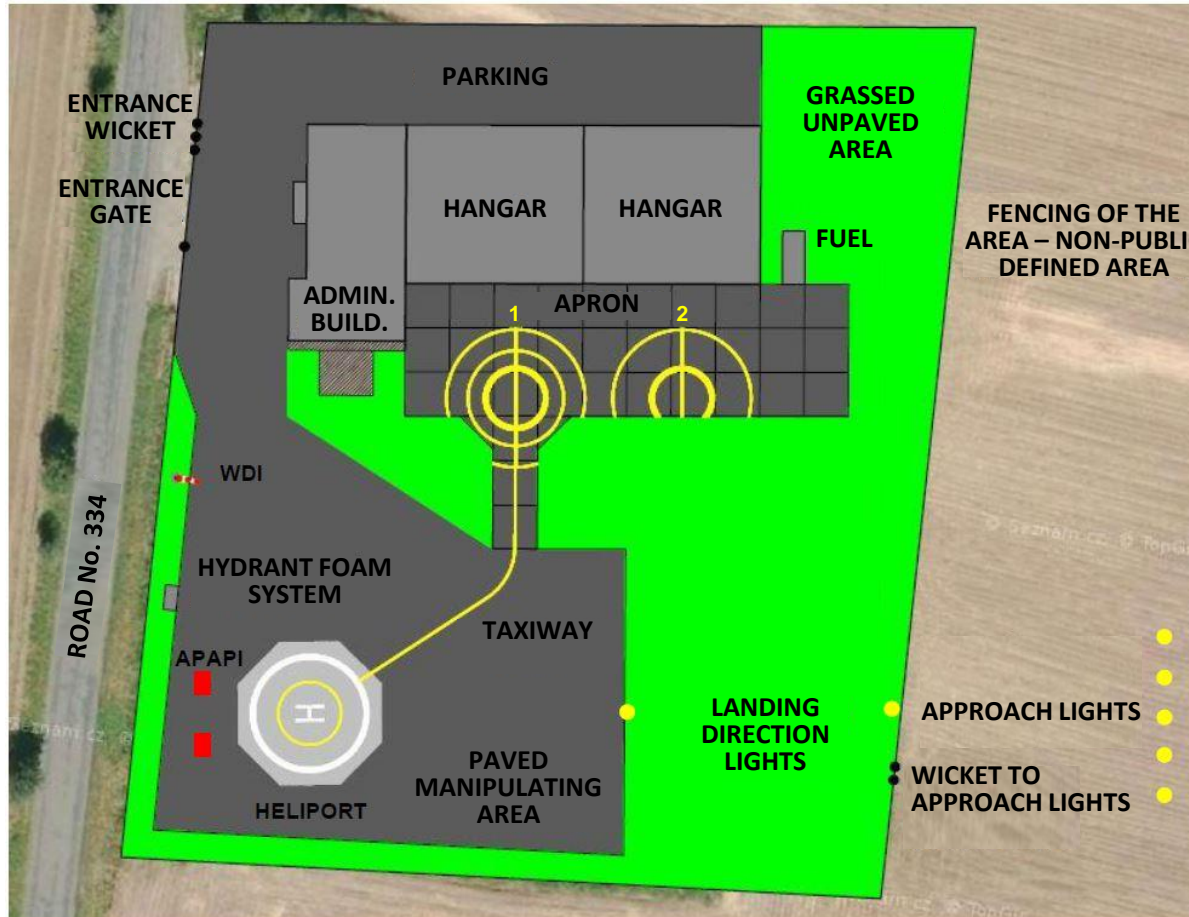
## Information about Chotouň heliport

### Basic information according to [AIP](#)

<b>Identifier</b>	<ul style="list-style-type: none"><li>• LKCO</li></ul>
<b>Frequency</b>	<ul style="list-style-type: none"><li>• CHOTO RADIO 132,210</li></ul>
<b>Position</b>	<ul style="list-style-type: none"><li>• N50°03'32,93"; E014°57'27,87" (1 km S of Chotouň heliport)</li></ul>
<b>Elevation</b>	<ul style="list-style-type: none"><li>• 830 ft / 253 m</li></ul>
<b>ATZ</b>	<ul style="list-style-type: none"><li>• Horizontally a circle of radius 3 NM, vertically 1 000 ft AGL</li></ul>
<b>Takeoff and landing direction</b>	<ul style="list-style-type: none"><li>• <b>Day</b> – Approach: 258°, 348° Take-offs: 078°, 168°</li><li>• <b>Night</b> – Approach: 258° Take-offs: 078°</li></ul>
<b>Heliport lighting system control</b>	<p><b>From helicopter through radio on FREQ 132,210 by keying:</b></p> <ul style="list-style-type: none"><li>• 3x within 5 sec. - intensity 10%</li><li>• 5x within 5 sec. - intensity 30%</li><li>• 7x within 5 sec. - intensity 100%</li></ul> <p>Automatic switch off after 15 minutes of last command.</p> <p><b>On site SZZ turn-on by RADIO officer</b> (it is necessary to check availability in advance according to the contacts below).</p>
<b>Contact information</b>	<ul style="list-style-type: none"><li>• Ing. Tomáš Škrabálek: tel. +420 603 551 221, email: info@helitom.cz</li><li>• Ing. Václav Kunášek: tel. +420 777 414 422</li></ul>



## Chotouň heliport plan, approach and take-off directions



348° (35)

168° (17)

258° (26)    078° (08)



# Chotouň heliport LKCO – general information



## Chotouň heliport in AIP

19 MAY 22 (1) Chotouň VFR-HEL-LKCO-VOC

### LKCO - Chotouň

Private domestic heliport VFR daytime  
 50 03 32.93 N, 014 57 27.87 E POS: 2.1 km ESE Chrásfany ELEV: 830 ft / 253 m

Choto RADIO 132,210

The heliport has ATZ: circle with radius 3NM centered on 50 03 32.93 N 014 57 27.87 E, vertically from GND to 1000ft AGL. ATZ penetrated by LK02 area. Chrásfany (LKCHRA) SLZ field situated in western part of the ATZ. Unless an individual written agreement has been concluded, other operators' helicopters may only use the heliport provided the written approval of the heliport operator (email or text message) has been given and only upon request, but not more than 12 hours before the scheduled flight time. For day flights from east to the heliport, carry out the south-east traffic circuits around Vrbňany village with 080° or 170° take-off directions and 260° or 350° approach directions. Night flight traffic circuit: When taking off from the heliport, climb on track 080°, turn right to avoid Vrbňany village and continue along I/2 road. Then turn left avoiding Ptáky village to intercept heliport glidepath in direction 260°. If the 200° approach is missed, climb and continue on track 260°, then turn left to intercept the left traffic circuit again. Carry out the circuit flight with respect to the published traffic circuit of SLZ field Chrásfany (LKCHRA). The minimum circuit altitude is 1300 ft AMSL, the recommended traffic circuit altitude is 1700 ft AMSL. Due to noise abatement measures, pilots are asked not to cross axis 09/26 extended to north (flights outside the village of Chotouň) and not to fly further over the surrounding populated areas (especially Chrásfany, Chotouň, Vrbňany, Ptáky villages). Heliport lighting system control is provided locally from Choto RADIO (FREQ 132.210) or by remote radio control from the heliport deck (by keying FREQ 132.210). 3s within 5 seconds - intensity 10% 5s within 5 seconds - intensity 30% 7s within 5 seconds - intensity 100% All lights turn off automatically 15 minutes after the radio remote control command.

VFR Manual - Czech Republic Air Navigation Services of the Czech Republic

VFR-HEL-LKCO-ADC Chotouň 19 MAY 22 (1)

### LKCO - Chotouň

Choto RADIO 132,210

surface-level heliport value "D" = 13 m	WDI (30 m MSL)
FATO - circle diameter 13.2 m, concrete, strength 6400 kg / 0.4 MPa	FATO designation markings
SA - circle diameter 26.4 m, asphalt	TLOF - perimeter markings/lighting TLOF
TLOF - circle diameter 13.2 m, concrete, strength 6400 kg / 0.4 MPa	A-PWP: 0' ALS: standard 90 m

1 WDI 50 03 33.65 N 014 57 26.96 E	856 ft / 261 m	night marking
2 hydrant 50 03 33.18 N 014 57 27.40 E	837 ft / 255 m	day marking

Underlying data © ČÚZK

	Approach:	Take-offs:
VFR day	258°, 348°	078°, 168°
VFR night	258°	078°

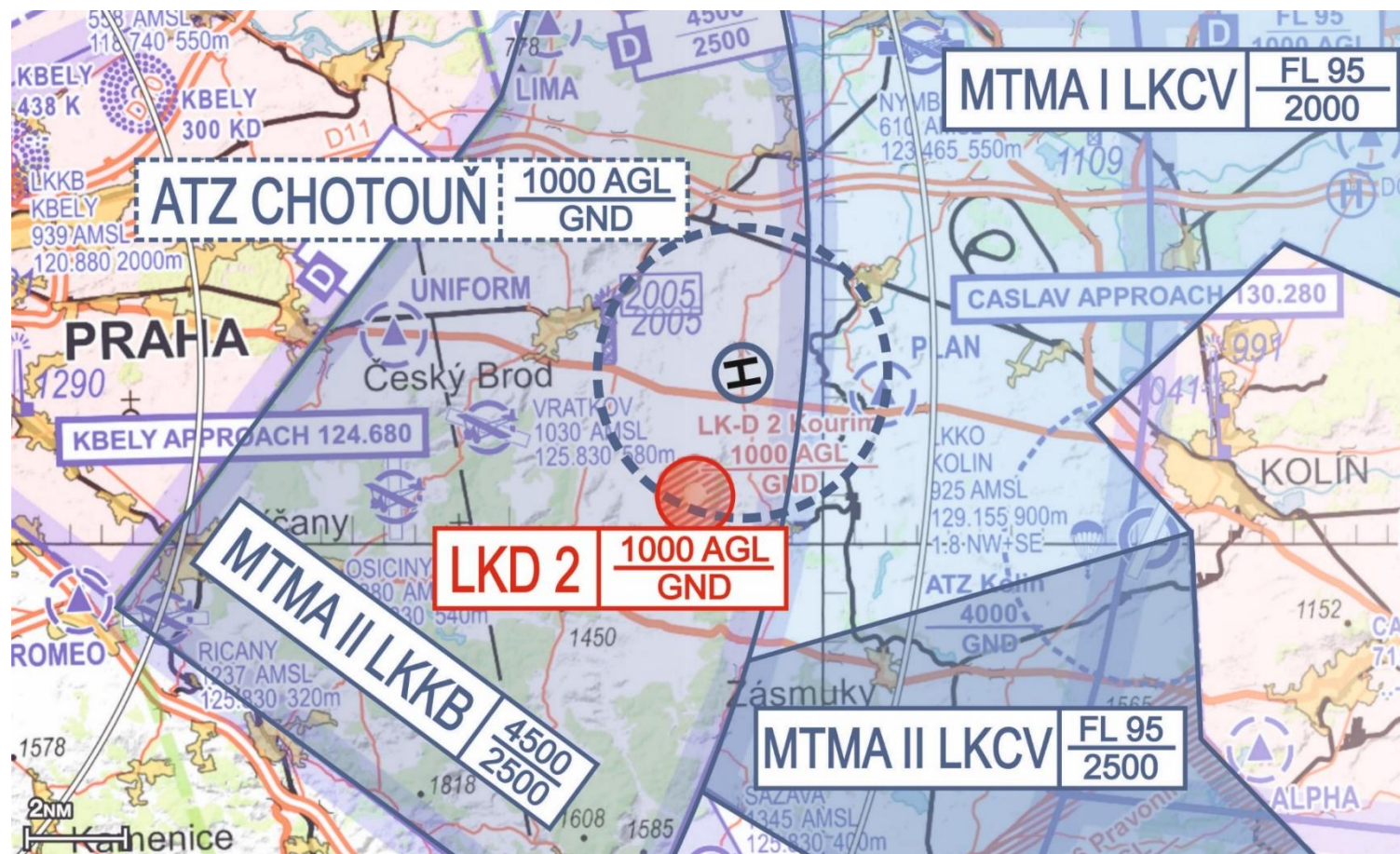
HK  
 JAVGAS 100LL, JET A1  
 Total Aero DM 15W-50, Total Aero 80, Total Aero 100, MOBIL JET OIL II  
 OIR (when pre-agreed)  
 Rescue and fire service: Cat H1

HELICENTRUM s.r.o.  
 Enterova 216, 507 23 Libáň  
 Ing. Tomáš Škrábalek (responsible person of the operator) ☎ +420 603 551 221, info@helitom.cz  
 Ing. Václav Kuráček ☎ +420 777 414 422

VFR Manual - Czech Republic Air Navigation Services of the Czech Republic

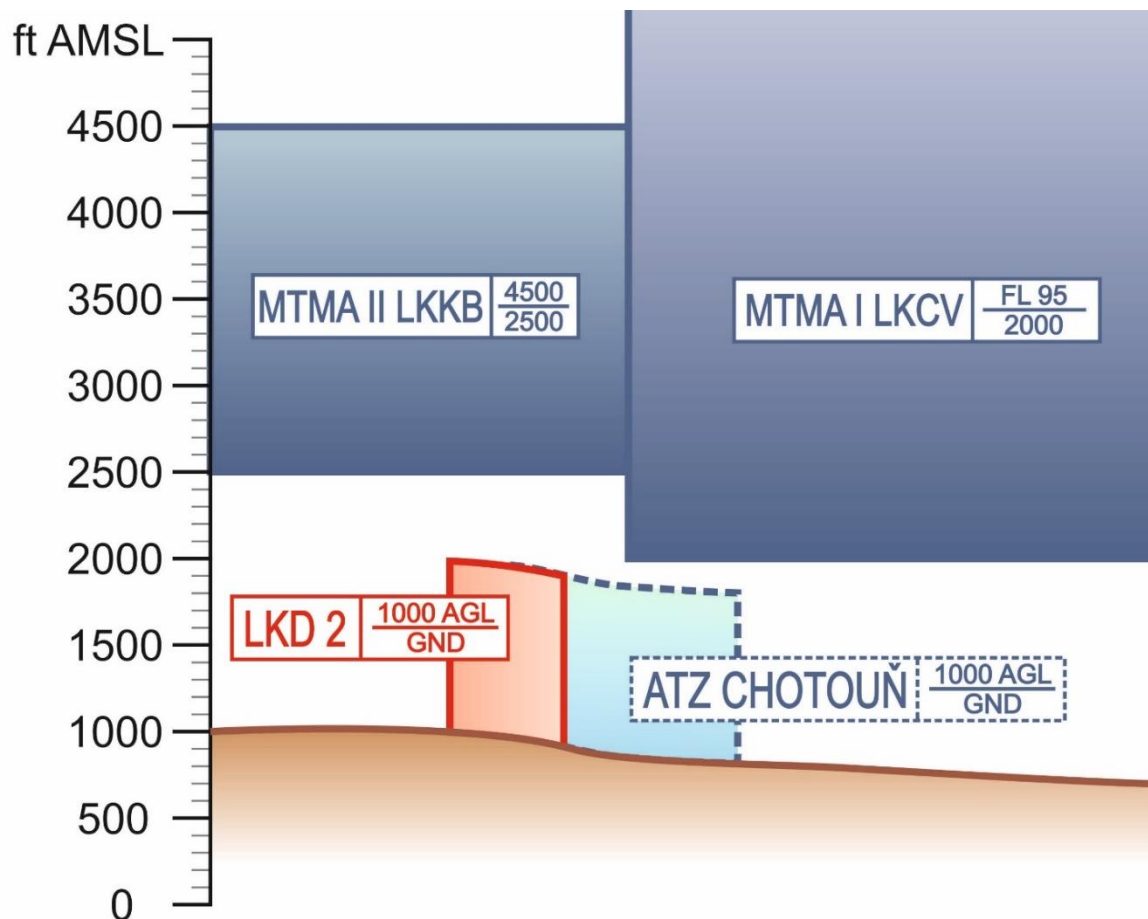


## ATZ of the Chotouň heliport – horizontal situation



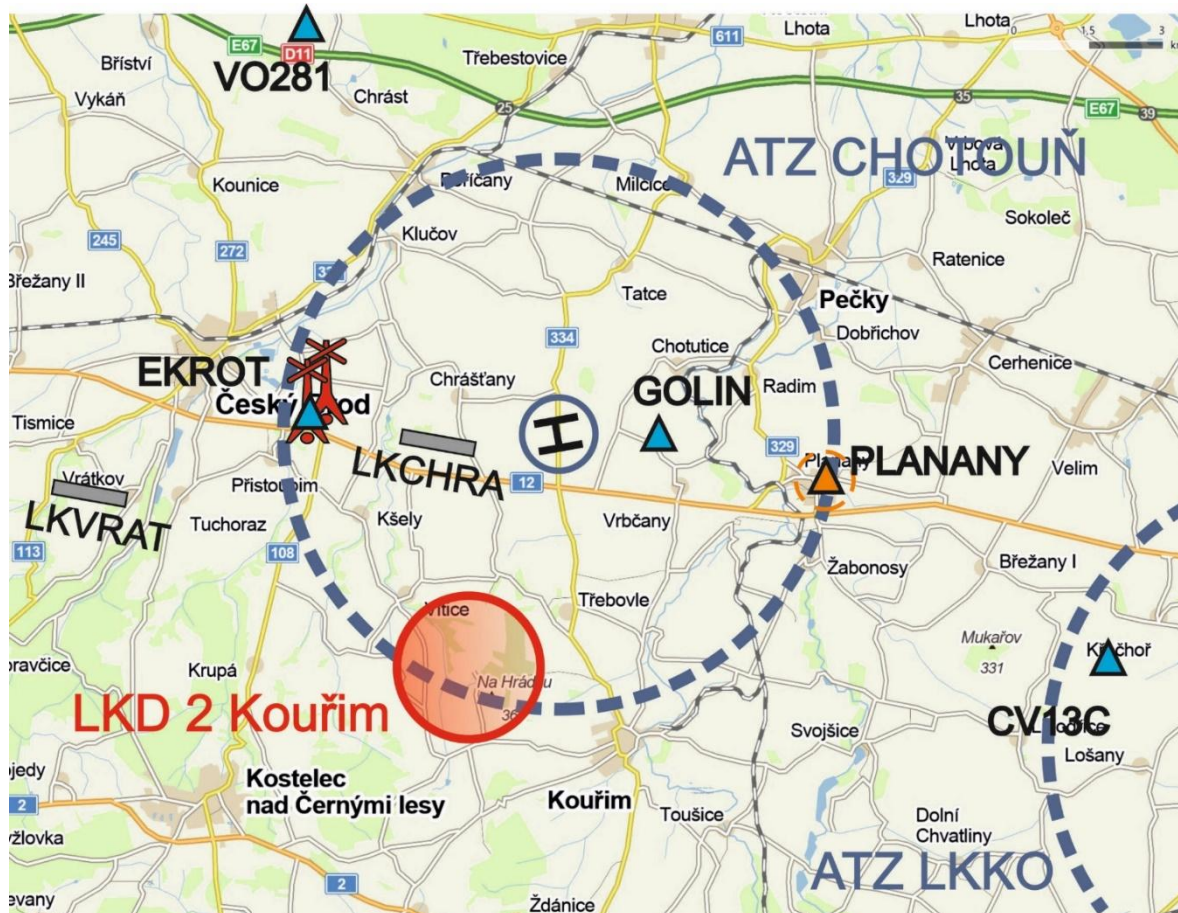


## ATZ of the Chotouň heliport – vertical situation





## ATZ of the Chotouň heliport – orientation points



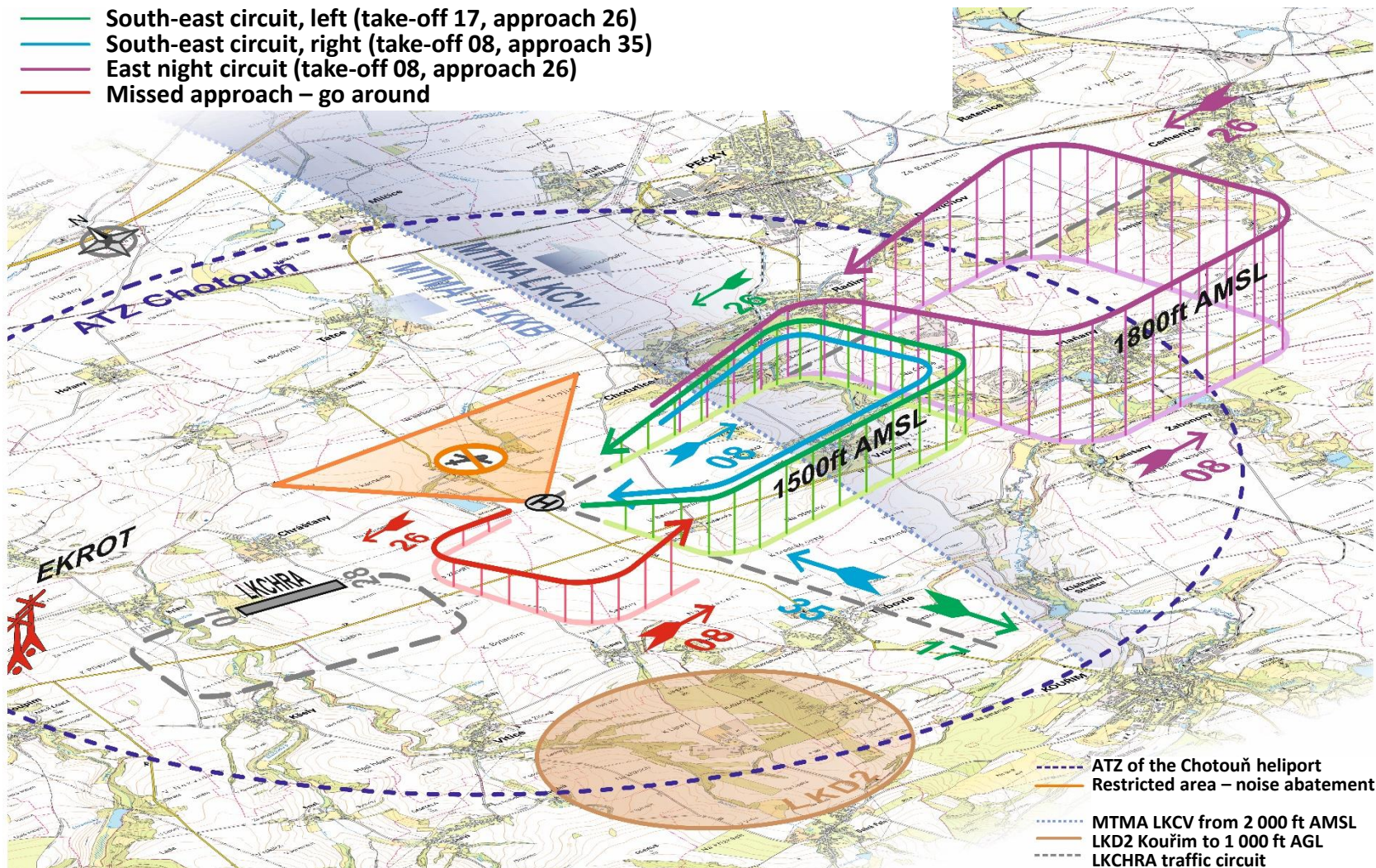






## Traffic circuits - Chotouň heliport

- South-east circuit, left (take-off 17, approach 26)
- South-east circuit, right (take-off 08, approach 35)
- East night circuit (take-off 08, approach 26)
- Missed approach – go around



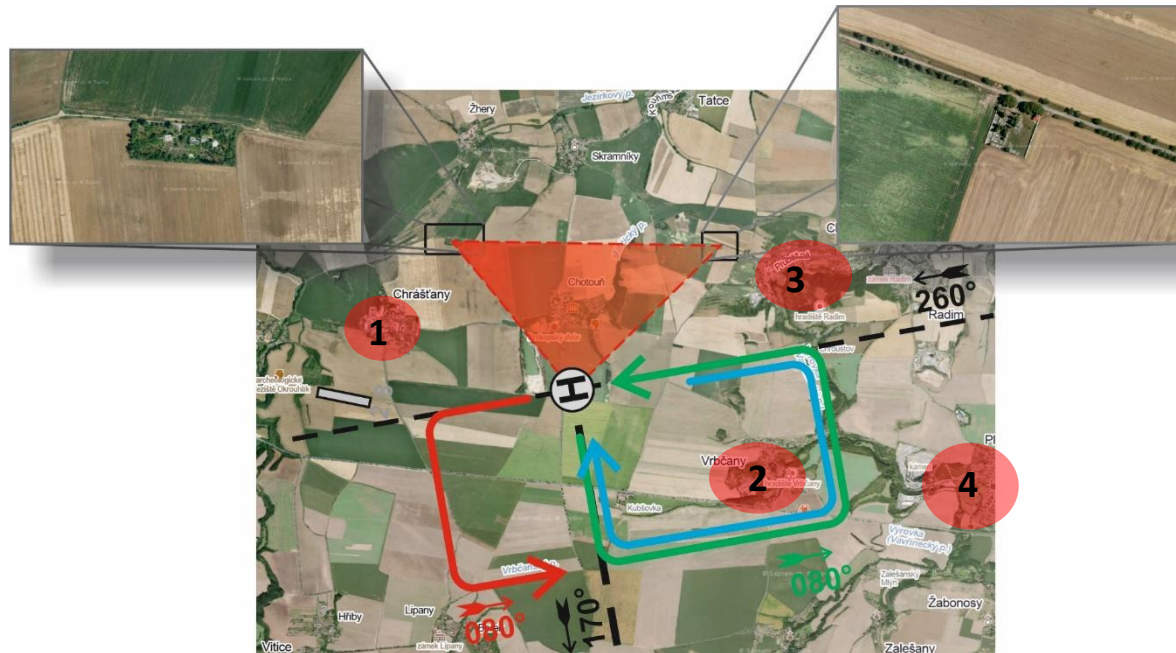


## Noise abatement

**We ask pilots to respect the noise abatement procedures**

- ✓ Do not fly over the Chotouň village within the boundaries marked below

Ruins south of  
Žhery village



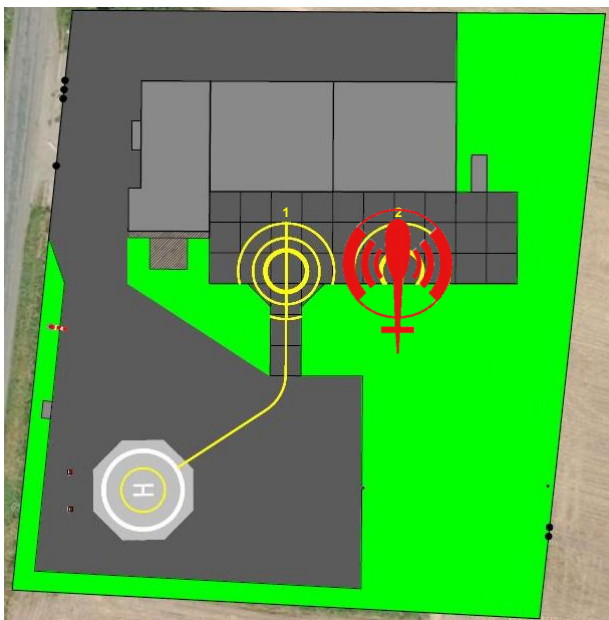
Cemetery west of  
Chotutice village

- ✓ Please also do not fly over following villages: Chrášťany (1), Vrbčany (2), Chotutice (3) and Plaňany (4)



## Procedure of departure

- ✓ Running helicopter on the ground on stand 2



<b>OK-SEF</b>	<i>Choto radio, OK-SEF, good day.</i>
Heliport	<i>OK-SEF, Choto radio, good day, (go ahead).</i>
<b>OK-SEF</b>	Helicopter R44 after start up, stand 2, two people on board, navigational flight to Liberec, ready for air-taxiing, <i>OK-SEF.</i>
Heliport	<i>OK-SEF, QNH 1013, take-offs in the heading 080, right circuits, traffic information: one helicopter on the down-wind position and one aircraft flying through ATZ from west to east, air-taxiing to heliport is cleared, Choto radio.</i>
<b>OK-SEF</b>	<i>QNH 1013, take-off 080, right circuit, traffic information received, air-taxiing to heliport, OK-SEF.</i>



## Procedure of departure

- ✓ Helicopter is hovering above heliport and is ready for take-off (all checks performed)

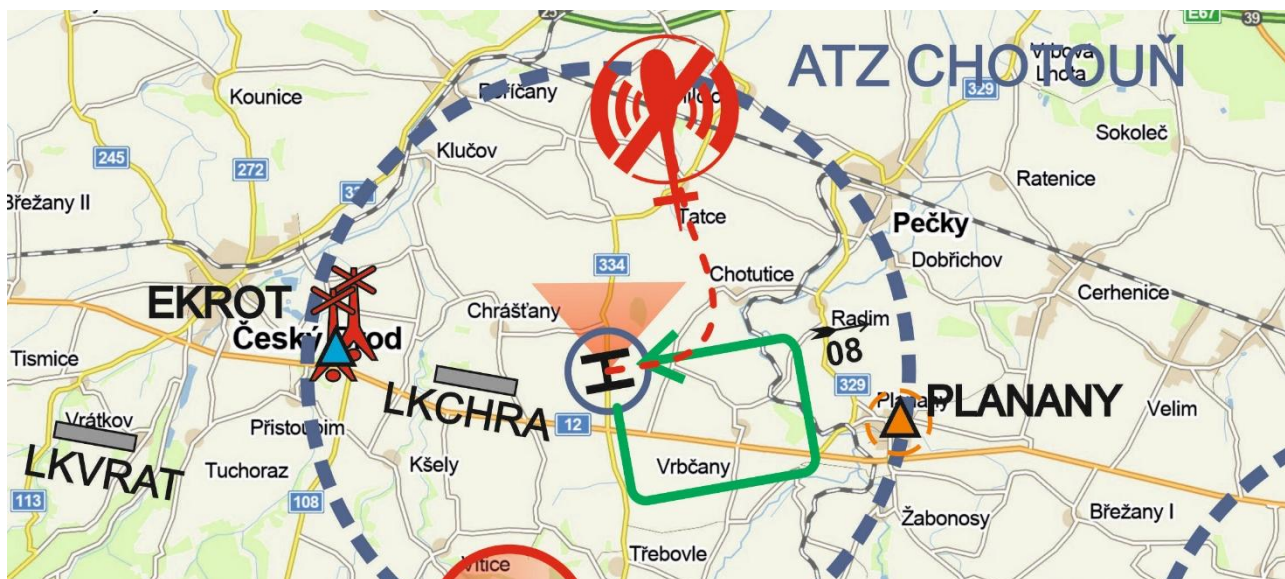


<b>OK-SEF</b>	<i>Choto radio, OK-SEF, ready for departure.</i>
Heliport	<i>OK-SEF, heliport clear for take-off, wind 110 10 kts, after take-off recommended climbing in the heading 080 altitude 1500 ft, then turn to required heading avoiding Chotouň, Chrášťany villages, Choto radio.</i>
<b>OK-SEF</b>	<i>Heliport clear for take-off, after take-off climbing to east, 1500 ft altitude, then turning to Liberec, avoiding Chotouň, Chrášťany, OK-SEF.</i>



## Procedure of departure

- ✓ Helicopter has flown the mentioned track and is about to leave the ATZ



<b>OK-SEF</b>	<i>Choto radio, OK-SEF, leaving ATZ north out-bound, continuing to Liberec.</i>
Heliport	<i>OK-SEF, other information service is available at 136,175 Praha Info, have a nice flight and good bye, Choto radio.</i>
<b>OK-SEF</b>	<i>136,175 Praha Info, good bye, OK-SEF.</i>



## Procedure of arrival

- ✓ The helicopter flies from LKLT and enters the ATZ from Český Brod



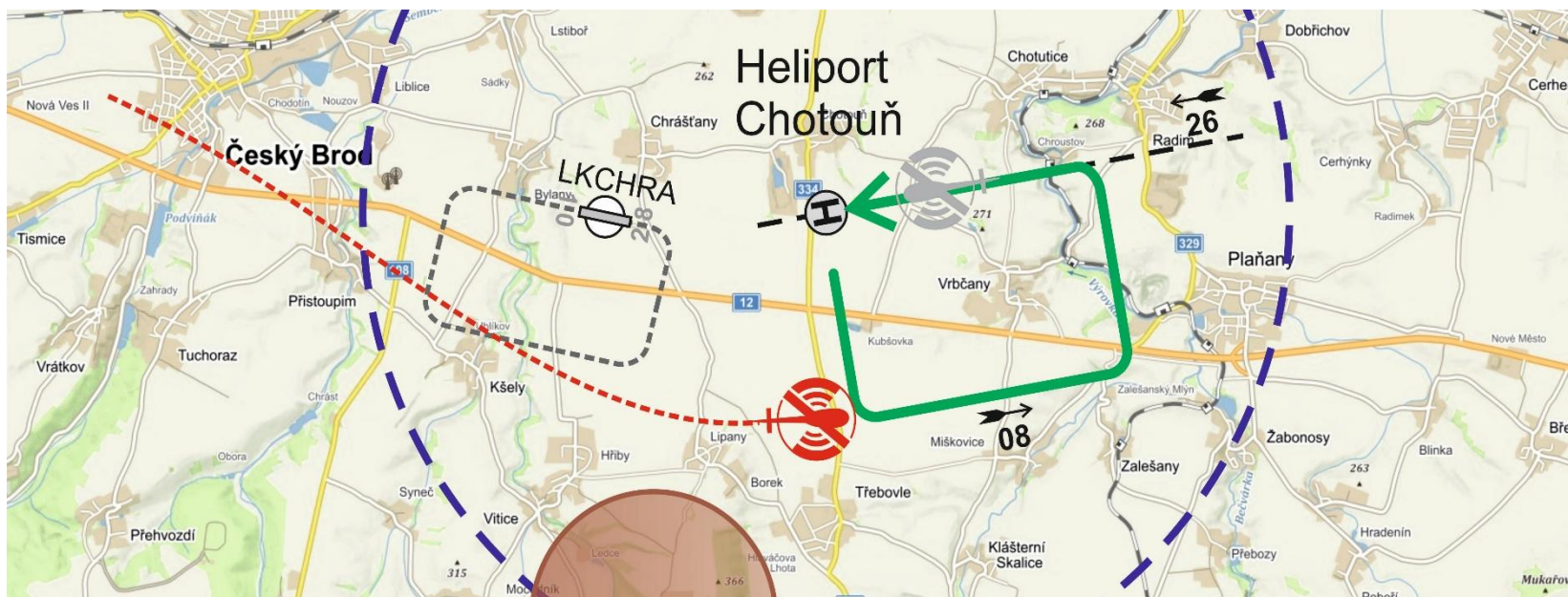
<b>OK-SEF</b>	<i>Choto radio, OK-SEF, good day.</i>
Heliport	<i>OK-SEF, Choto radio, good day, (go-ahead).</i>
<b>OK-SEF</b>	Helicopter R44, from LKLT to Chotouň, 4 NM west inbound, altitude 2000 ft QNH 1015, <i>OK-SEF</i> .
Heliport	<i>OK-SEF, QNH 1013, arrivals heading 260 left circuits, traffic information: one helicopter on the down-wind position and one airplane on the final runway 28 strip Chrástany, Choto radio.</i>
<b>OK-SEF</b>	QNH 1013, traffic information received, monitoring traffic, heading for final 26, left circuits, will join to left down-wind, <i>OK-SEF</i> .



## Procedure of arrival

- ✓ Helicopter abeam of heliport is flying down-wind leg

<b>OK-SEF</b>	<i>Choto radio, OK-SEF, left down-wind 26.</i>
<b>Heliport</b>	<i>OK-SEF, number two for approach, helicopter R22 on short final, Choto radio.</i>
<b>OK-SEF</b>	<i>Number two, traffic in sight, OK-SEF.</i>

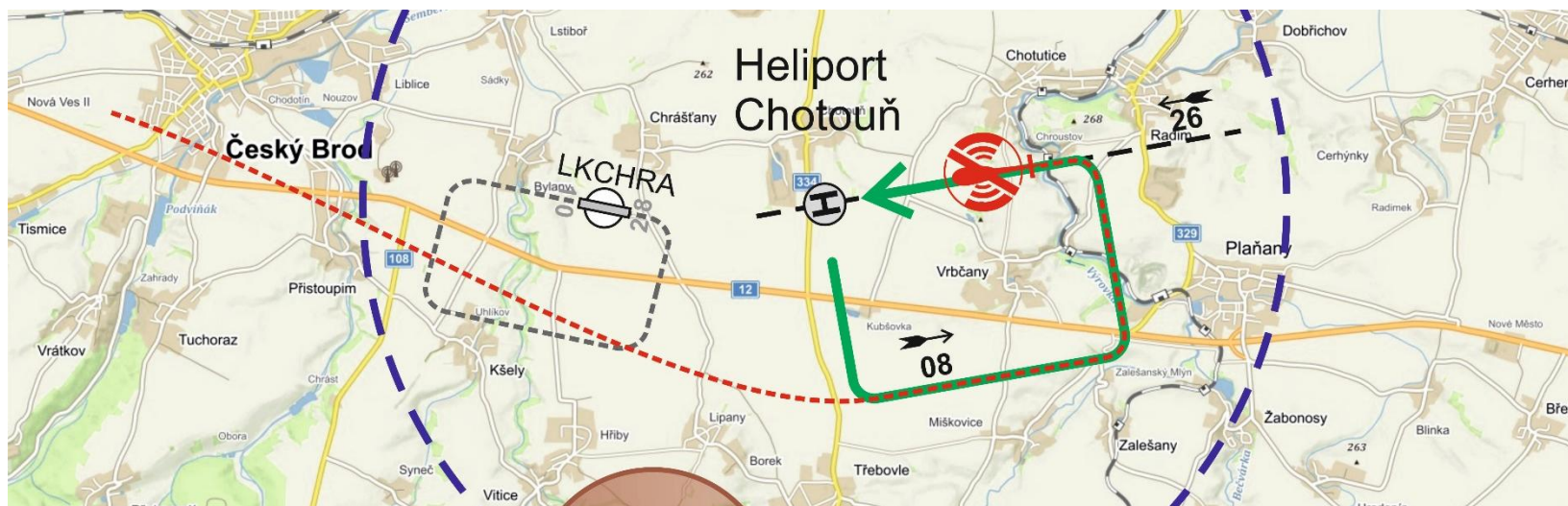






## Procedure of arrival

- ✓ Helicopter is descending on final



OK-SEF	<i>Choto radio, OK-SEF, final 26.</i>
Heliport	<i>OK-SEF, heliport clear for landing, wind 290 7 kts, Choto radio.</i>
OK-SEF	<i>Heliport clear for landing, OK-SEF.</i>



## Procedure of arrival

- ✓ Helicopter is hovering out of the heliport



<b>OK-SEF</b>	<i>Choto radio, OK-SEF, heliport vacated, air taxi to apron.</i>
<b>Heliport</b>	<i>OK-SEF, recommended stand 1, Choto radio.</i>
<b>OK-SEF</b>	<i>Roger, landing on stand 1, OK-SEF.</i>



## Procedure of arrival

- ✓ Helicopter after landing on the apron in front of the hangar



<b>OK-SEF</b>	<i>Choto radio, OK-SEF, after landing, stand 1, shutting-down.</i>
Heliport	<i>OK-SEF, welcome in HELITOM, Choto radio.</i>



**Thank you for your attention**

